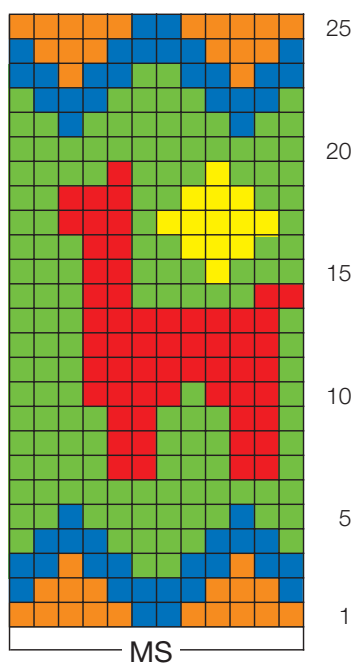


MODELL 3-5, SEITE 13

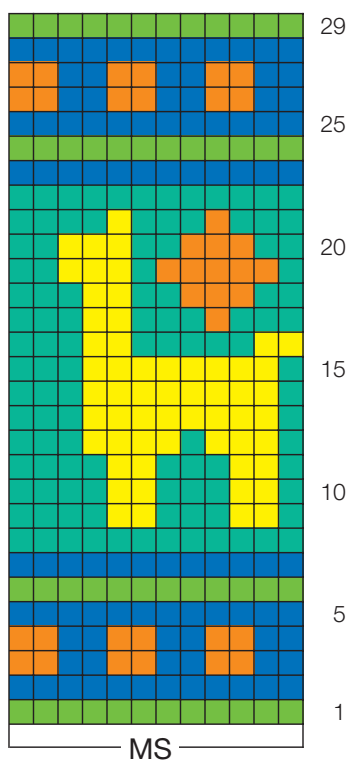
ZÄHLMUSTER

3 Körbe

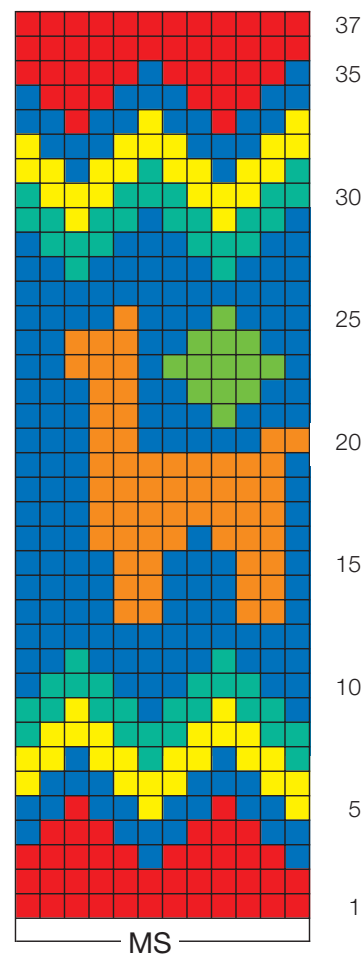
Kleiner Korb



Mittlerer Korb



Großer Korb



Zeichenerklärung:

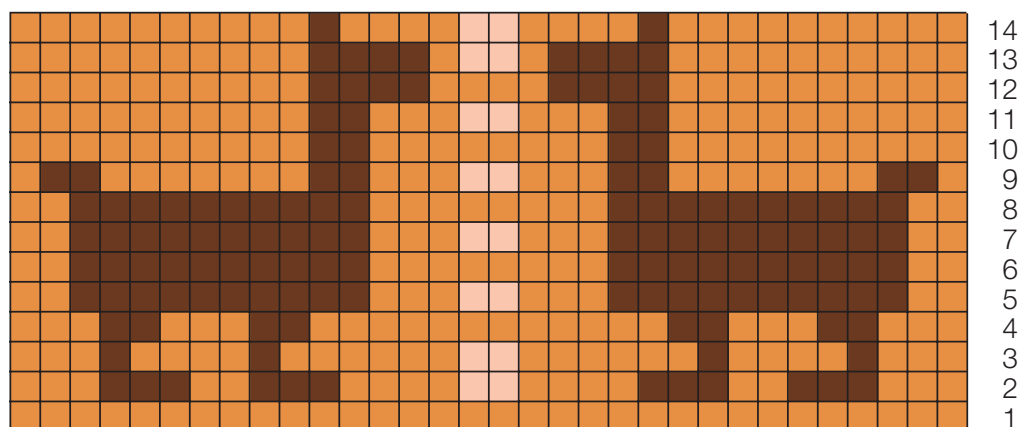
1 Kästchen = 1 feste Masche und 1 Reihe

- | | | |
|---|--|--|
| ■ = Grün | ■ = Orange | ■ = Türkis |
| ■ = Rot | ■ = Dunkelblau | ■ = Gelb |

MODELL 6, SEITE 16


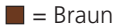

ZÄHLMUSTER

Sofa-Utensilo



Zeichenerklärung:

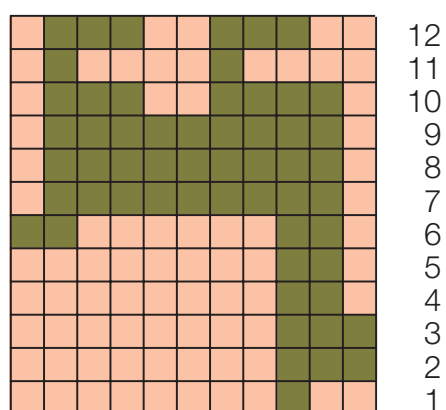
1 Kästchen = 1 feste Masche und 1 Reihe

 = Natur  = Braun  = Camel

MODELL 8, SEITE 22


ZÄHLMUSTER


Umhängetasche



Zeichenerklärung:

1 Kästchen = 1 feste Masche und 1 Reihe

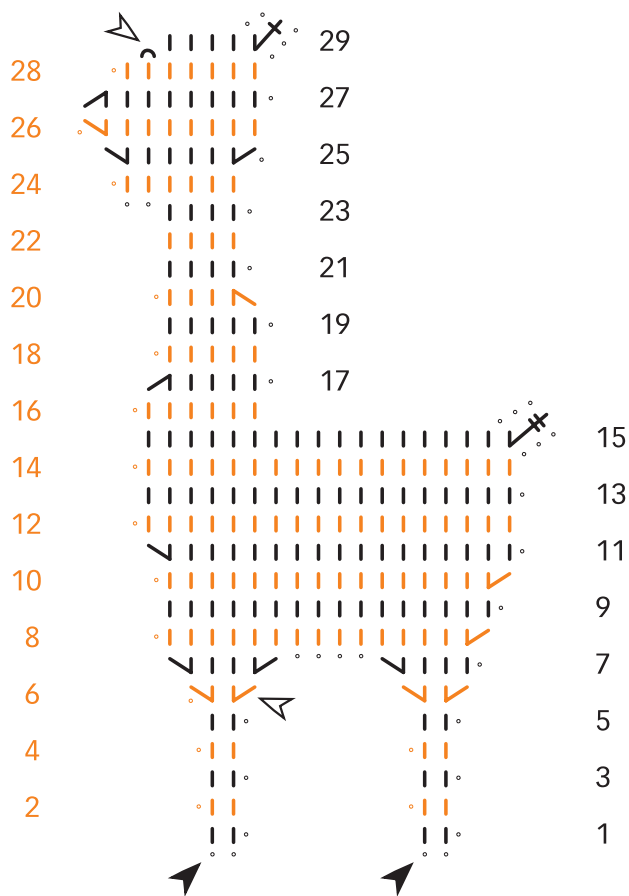
 = Natur

 = Olive



MODELL 9, SEITE 26

HÄKELSCHRIFT

Lama-Patches



Zeichenerklärung

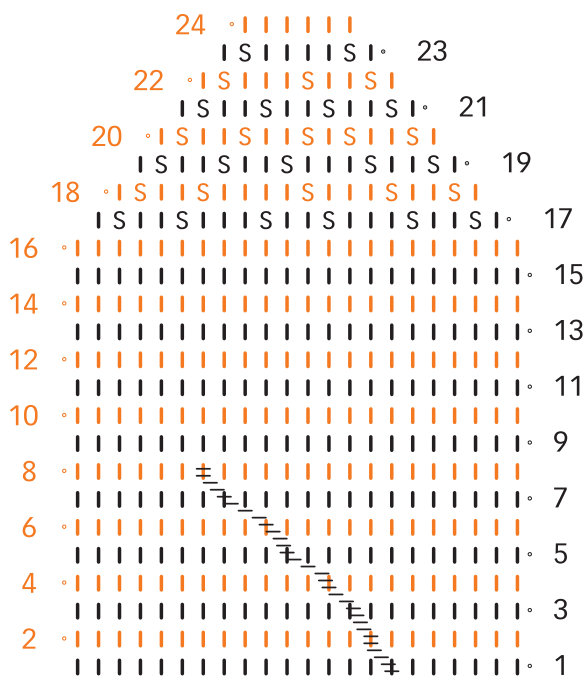
- = Luftmasche
- ∩ = Kettmasche
- | = feste Masche
- ↙ = 2 feste Maschen in 1 Masche
- ↘ = 2 feste Maschen zusammen abmaschen
-  = 3 Luftmaschen, 1 Doppelstäbchen, 3 Luftmaschen, 1 feste Masche in die 1. feste Masche,
-  = 3 Luftmaschen, 1 Stäbchen, 2 Luftmaschen, 1 feste Masche in die 1. feste Masche
- = Anfang
- = Faden abschneiden

MODELL 17, SEITE 46

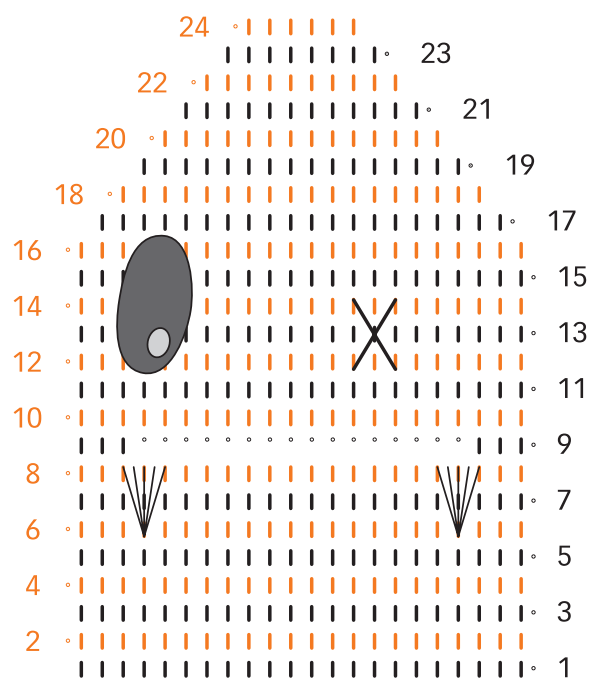
HÄKELSCHRIFT

Tampontäschchen

Häkelschrift 1 Rückseite



Häkelschrift 2 Vorderseite

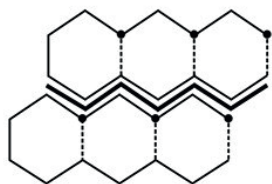


Zeichenerklärung

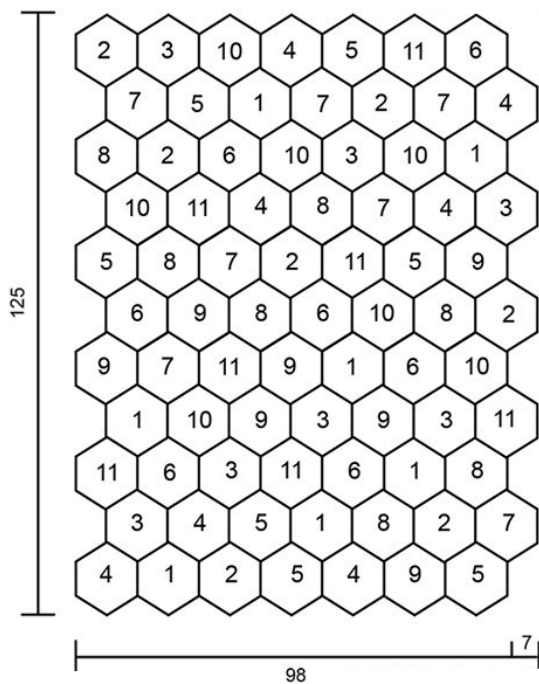
- = 1 Luftmasche
- | = 1 feste Masche
- S = 1 Schuppe bzw. feste Masche
- //// = Stielstich
- = Plattstich
- X = Kreuzstich

MODELL 18, SEITE 48
SCHEMA UND HÄKELSCHRIFT
Patchworkdecke

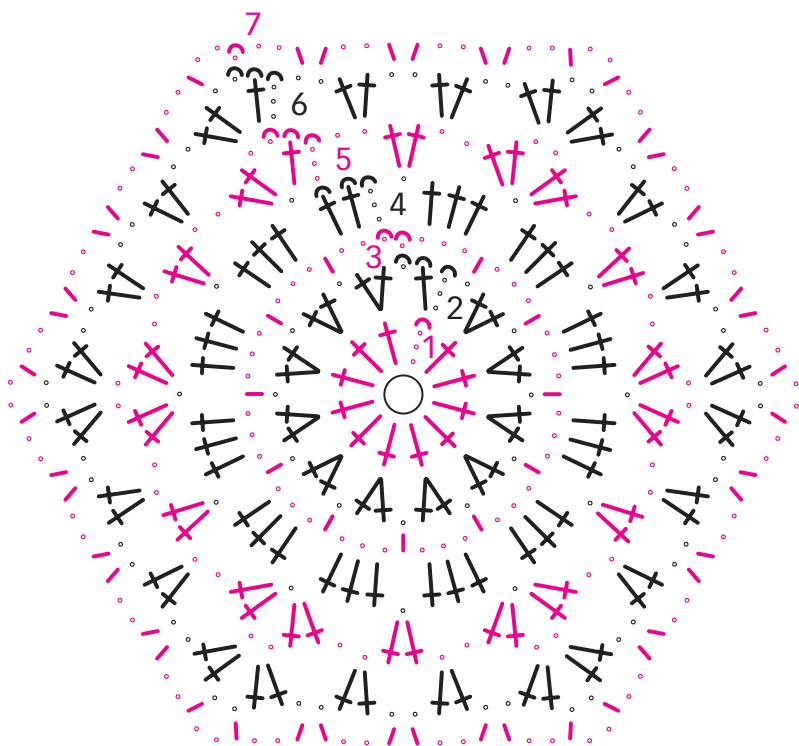
Schema A



Schema B



Häkelschrift



Zeichenerklärung

- = Luftmasche
- | = feste Masche
- † = Stäbchen