

# OBERER RAND

Blatt 1

1,5 cm

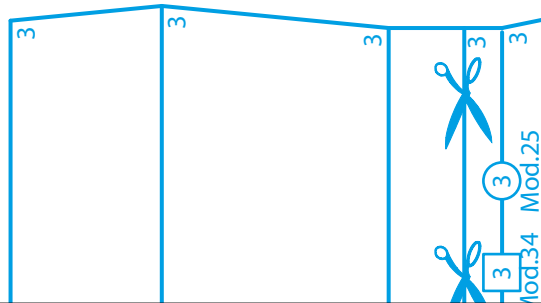
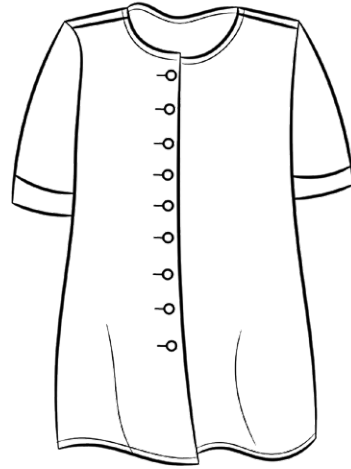
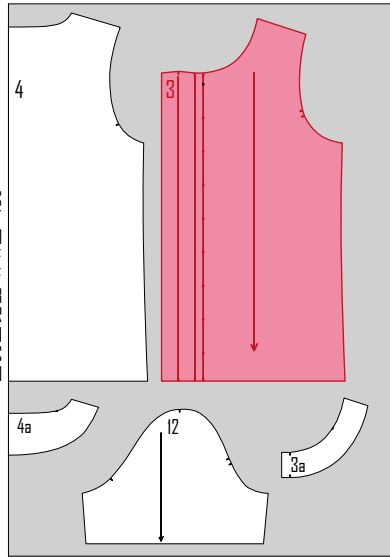
1,5 cm

# C Milliblu's™

Nr. 1

© by OZ Verlag GmbH, 79618 Rheinfelden, Germany 2017.  
All designs, patterns and magazines are protected under the Copyright Act. No material may be reproduced in part or in whole. All commercial and industrial use is strictly prohibited.

## Modell 25 + 34 Schnittteil 3



3

Ausschnittbeleg

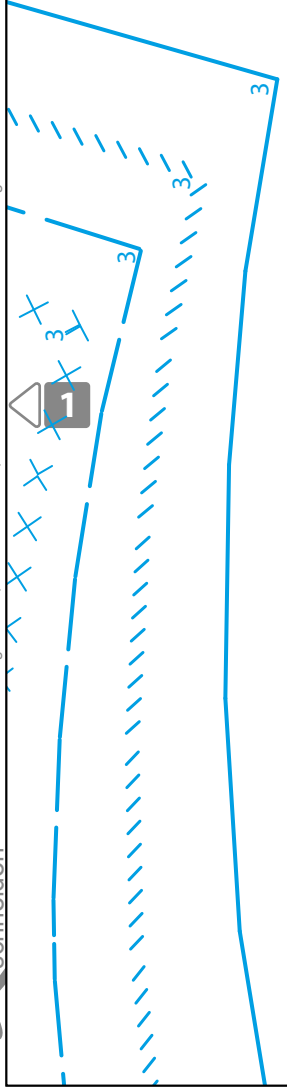
kleben

1

kleben

Blatt 2  
1,5 cm  
1,5 cm

© OZ-Verlags-GmbH, Römerstraße 90, D-79618 Reichenfelden - www.oz-verlag.de



4



kleben

Blatt 3  
1,5 cm  
1,5 cm



Fadenlauf

Mod.25  
3  
Mod.34

Mod.25  
3

Mod.34  
3

Mod.25  
3

Mod.34  
3

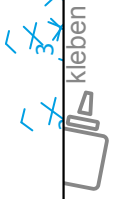


8

3



6





schneiden

© OZ-Verlags-GmbH, Römerstraße 90, D-79618 Reichenfelden - www.oz-verlag.de

6

Blatt  
1,5 cm  
1,5 cm



schneiden

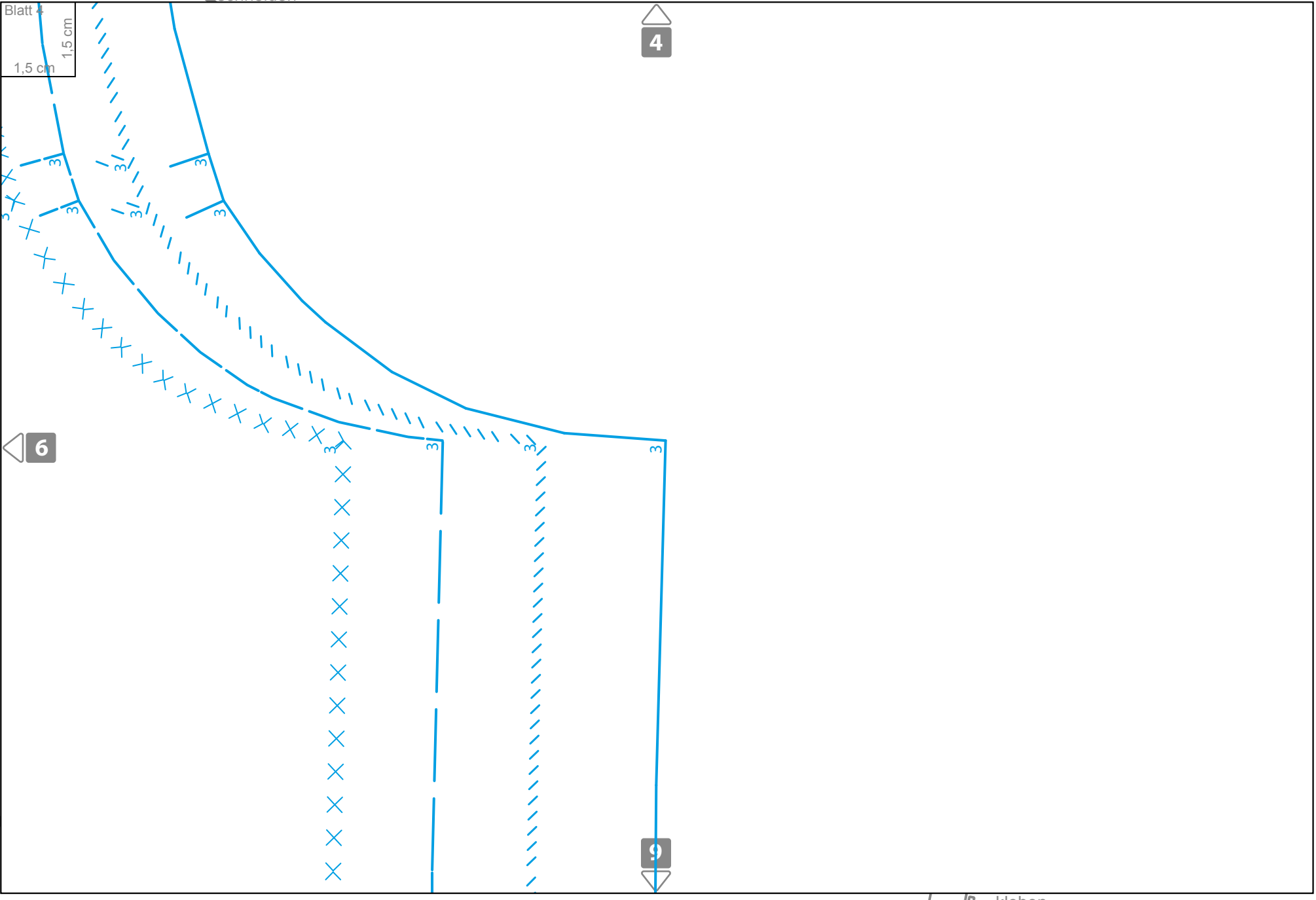
4

9



kleben

RECHTER RAND



Blatt 5  
1,5 cm  
1,5 cm



angeschnittener Beleg

Vordere Kante

Mod.34  
3

3  
Mod.25

3  
Mod.25

Mod.34  
3

3  
Mod.25

Vordere Mitte

13

8



11



 schneiden

Blatt 6  
1,5 cm  
1,5 cm

 11



 9

14 

 kleben

RECHTER RAND

 schneiden

© OZ-Verlags-GmbH, Römerstraße 90, D-79618 Reichenfelden - www.oz-verlag.de



3

3

3

3

3

Mod.25

3

Mod.25

3

Mod.34

13

16



UNTERER RAND



Blatt 8  
1,5 cm  
1,5 cm

14

16



© OZ-Verlags-GmbH, Römerstraße 90, D-79618 Reihentfelden - www.oz-verlag.de

UNTERER RAND

RECHTER RAND

